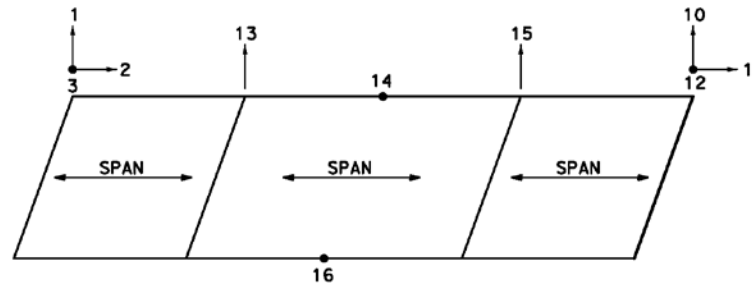


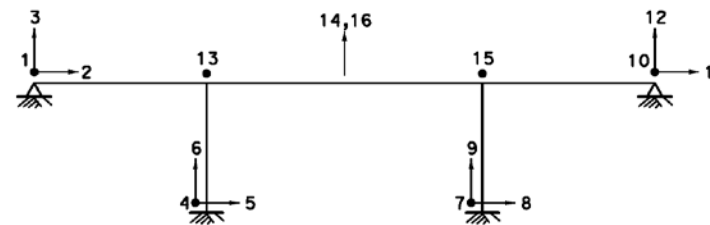
---

## **TP ATTACHMENT 14-2 – SEISMIC INSTRUMENTATION POSITIONING DIAGRAMS**

**PRADO OH**



**PLAN**

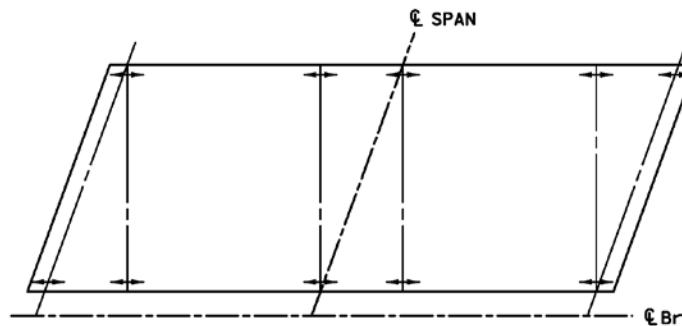


**ELEVATION**

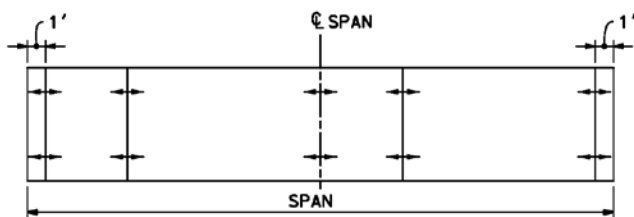
**ACCELEROMETERS:** TOTAL=16

"DISCLAIMER-Riverside County Transportation Commission, Caltrans and various other public agencies are still in the planning stages of the proposed project. No decision has been made regarding the alignment or expansion of the freeway, roads, off ramps and ancillary facilities in the areas shown. Nothing reflected herein is intended to, or shall be construed to, mean that a decision has been made to acquire any property shown or implement any depicted capital improvement. The information contained and/or depicted herein is for public agency planning purposes only and not intended to cause any action, or inaction, by anyone or to be relied upon by any third party."

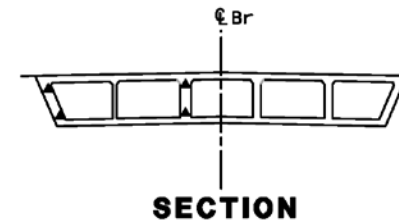
**PRADO OH**



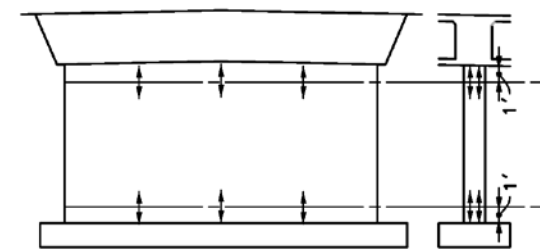
**PLAN (3)**



**ELEVATION (3)**



**SECTION**



**BENT (2)**

**LEGEND:**

- ACCELEROMETERS
- TILT METER
- ▲ STRAIN GAGES

POST MILES  
On SR-91-12-Orq-16.0/17.7  
On SR-91-8-Riv-RO.0/R10.8  
On I-15-8-Riv-R37.8/R40.7

**PRELIMINARY**  
**Aug. 08, 2011**

**SR-91 CORRIDOR**  
**IMPROVEMENT PROJECT**  
**PRADO OH**



**STRAIN GAGES:** TOTAL=(12x2)+(10x2)X3=84

**OTHER INSTRUMENTS:** TEMPERATURE=2, HUMIDITY=2

DGN FILE => #REQUEST      DATE PLOTTED => #DATE      USERNAME => #USER