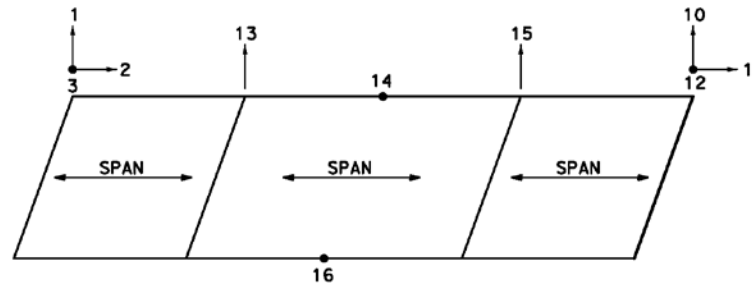
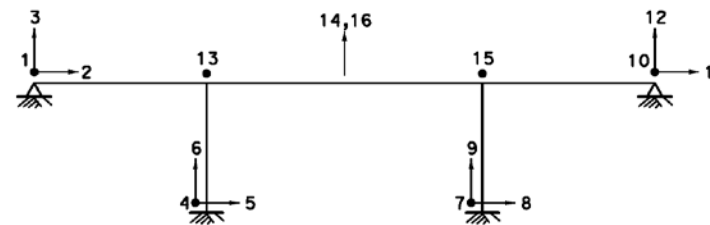

TP ATTACHMENT 14-2 – SEISMIC INSTRUMENTATION POSITIONING DIAGRAMS

PRADO OH



PLAN

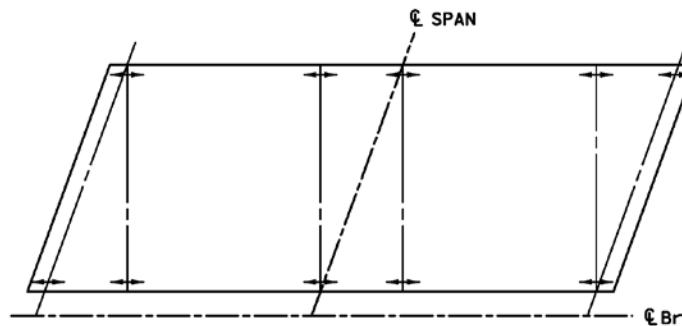


ELEVATION

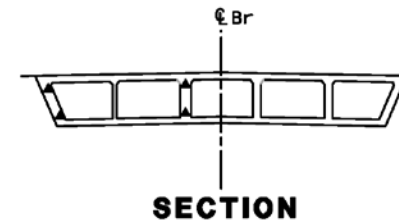
ACCELEROMETERS: TOTAL=16

"DISCLAIMER-Riverside County Transportation Commission, Caltrans and various other public agencies are still in the planning stages of the proposed project. No decision has been made regarding the alignment or expansion of the freeway, roads, off ramps and ancillary facilities in the areas shown. Nothing reflected herein is intended to, or shall be construed to, mean that a decision has been made to acquire any property shown or implement any depicted capital improvement. The information contained and/or depicted herein is for public agency planning purposes only and not intended to cause any action, or inaction, by anyone or to be relied upon by any third party."

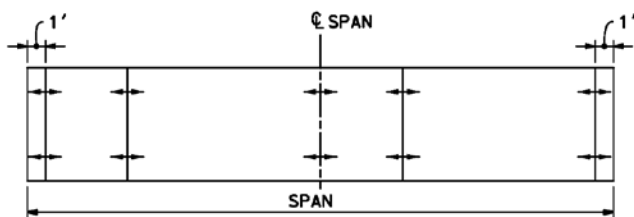
PRADO OH



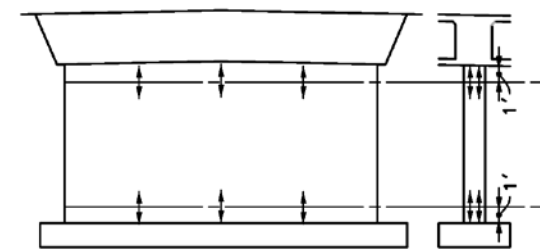
PLAN (3)



SECTION



ELEVATION (3)



BENT (2)

LEGEND:

- ACCELEROMETERS
- TILT METER
- ▲ STRAIN GAGES

POST MILES
 On SR-91-12-Orq-16.0/17.7
 On SR-91-8-Riv-RO.0/R10.8
 On I-15-8-Riv-R37.8/R40.7

PRELIMINARY
Aug. 08, 2011

SR-91 CORRIDOR
IMPROVEMENT PROJECT
PRADO OH



STRAIN GAGES: TOTAL=(12x2)+(10x2)X3=84

OTHER INSTRUMENTS: TEMPERATURE=2, HUMIDITY=2

DGN FILE => #REQUEST DATE PLOTTED => #DATE USERNAME => #USER